

Excellent :



A503

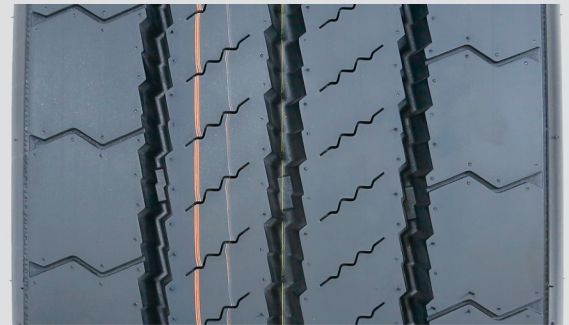
Regional Steer



VEHICLE TYPE



TREAD DETAIL



TECHNICAL SPECIFICATIONS

Tire Size	PR	Pattern Description	Tread Depth		Rim	Tube Type	L.I./S.S.	Over Diameter (mm)	Section Width (mm)	Inflation Pressure(kpa)		Load Capacity(kg)	
			mm	1/32 Inch						Single	Dual	Single	Dual
11R22.5	16	BUS STEER	22.00	27.7	8.25	TL	148/145J	1060	282	830	830	3150	2900
275/70R22.5	18	BUS STEER	22.00	27.7	8.25	TL	150/145J	962	280	900	900	3350	2900
295/80R22.5	18	BUS STEER	21.00	26.5	9.00	TL	154/149J	1042	295	900	900	3550	3250